

# BUDWEG

BETTER BE SAFE



SALES PRESENTATION



## Who is Budweg?



- Budweg is a leading supplier of remanufactured brake calipers for the European automotive aftermarket.
- Budweg's range of calipers covers more than 98% of the personal vehicles in operation in Europe.
- More than 40 years of experience with remanufacturing brake calipers for the automotive aftermarket.
- A product range containing more than 4,200 calipers and 2,400 spare parts.

# Budweg Facts

- **Head Office:** Odense, Denmark
- **Office & Plant m2:** 16,600m2
- **Employees:** 142 (BC 100)
- **Turnover:** 239 mill. DKK (€32 mill.)
- **Product Range:** 4,200 brake calipers and 2,400 spare parts
- **Yearly produced calipers:** 800,000 units
- **Used Caliper Cores in stock:** 400,000 units
- **Brake Calipers in stock:** 250,000 units
- **Claims rate:** Below 0.3%

ISO 9001:2015 certificated



Founded by Henning Larsen	The sons of Henning Larsen take over the company	100% owned subsidiary opens in Hanil, South Korea	New 10,000m2 plant in DK Insourced surface treatment Semi-automatic assembly line	16,600m2 expansion of the plant in DK Automatic packaging lines implemented	The majority of shares are sold to the Danish equity fund Capidea. Inhouse product test facilities commissioned	Expanded application of automatic packaging line Korean subsidiary closed – production moved to DK	
1978	1999	2007	2012-14	2015-17	2018	2021	
 Employees	2	123	108	100	142	142	135
 Turnover	DKK 81 mill. €10 mill.	DKK 111 mill. €15 mill.	DKK 144 mill. €19 mill.	DKK 199 mill. €26 mill.	DKK 239 mill. €32 mill.	DKK 239 mill. €32 mill.	



# Key Differentiators



## Rubber Parts

- We have developed our own square O-ring for pistons
- We use a proprietary type of high-quality rubber, which has been qualified by the Danish Technological Institute
- We use our own molding tools for dust caps



## EPB Calipers

- Inhouse test environment specific to EPBs
- An engineering department dedicated solely to EPBs
- Product improvements to OE designs



## Inhouse Surface Treatment

- Specially developed liquids and carefully timed processes for each bath
- Tested to resist ozone, heat and other factors



## 5-year warranty

We have trust in our products, our processes, and the employees that manufacture the products. That is why all Budweg products are covered by 5 years of warranty.



## Extensive range

Budweg are first-to-market with new caliper models, and we have a vast selection of caliper types and spare parts in stock.

Our range includes:

- 4,200 Brake caliper models
- 2,400 Spare part kits

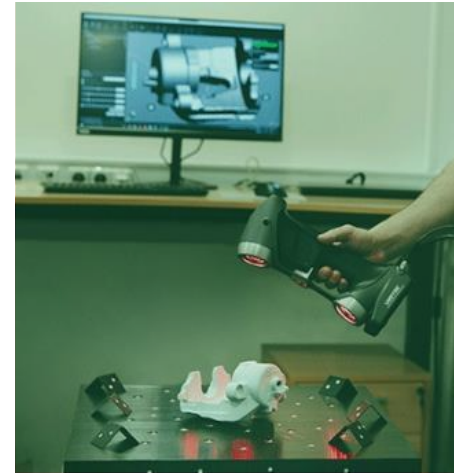
# Reliable Inhouse Production

- Digital document and process management system
- All work-stations have well documented work processes
- Training programme for all new employees
- Internal audits
- Competent staff with many years of experience and extensive training
- Incoming quality control (IQC) of spare parts








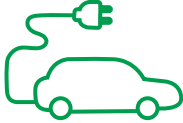


**ISO 9001:2015 certified**

## KEY DIFFERENTIATORS



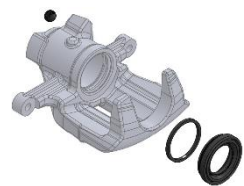
### Data-driven Design and Manufacturing

- 3D scanning of caliper housings and spare parts
- Detailed technical drawings
- Critical dimensions and tolerances
- Material requirements
- 3D printing of key products
- Samples for testing
- Final approval

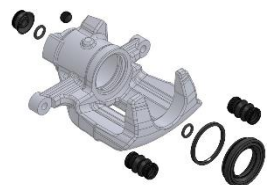
Personal Vehicle	Electrical Vehicle (EV)	Light Commercial (LCV)	Performance
<p><b>Amount, Models:</b></p> <p>Covering: 98%VIO/Europe</p> <p><b>Example Vehicles:</b></p> <p>Audi: A3 Seat: Leon Skoda: Octavia VW: Golf</p> 	<p><b>Amount, Models:</b></p> <p>Covering: 80%VIO/Europe</p> <p><b>Example Vehicles:</b></p> <p>BMW: i3 Kia: Ceed Nissan: Leaf VW:ID.3</p> 	<p><b>Amount, Models:</b></p> <p>Covering: 92%VIO/Europe</p> <p><b>Example Vehicles:</b></p> <p>Nissan: NV400 Opel: Movano Renault: Master</p> 	<p><b>Example Vehicles:</b></p> <p>Audi: e-tron, RS5 BMW: M5 Porsche: 911 Mercedes: AMG</p> 
			

# Repair Kits

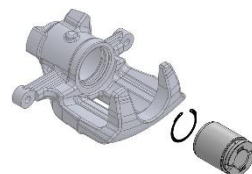
## FRONT



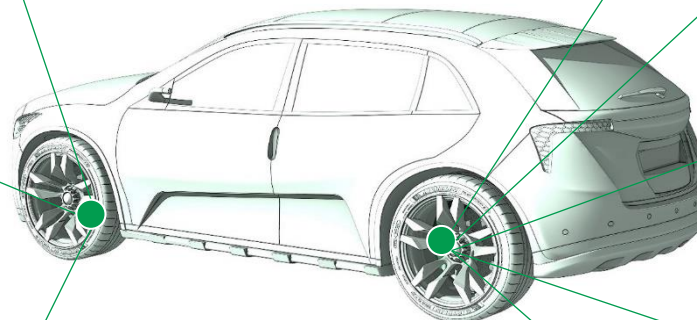
**Repair Kit Small**  
Group 18



**Repair Kit Large**  
Group 20

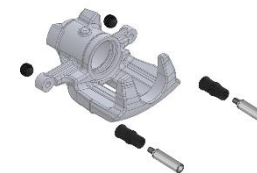


**Piston**  
Group 23

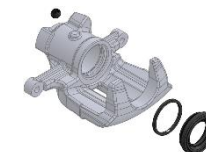


## REAR

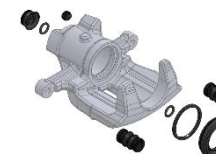
**Guide Pin Set**  
Group 16



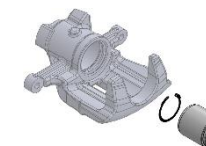
**Repair Kit Small**  
Group 18



**Repair Kit Large**  
Group 20



**Piston**  
Group 23

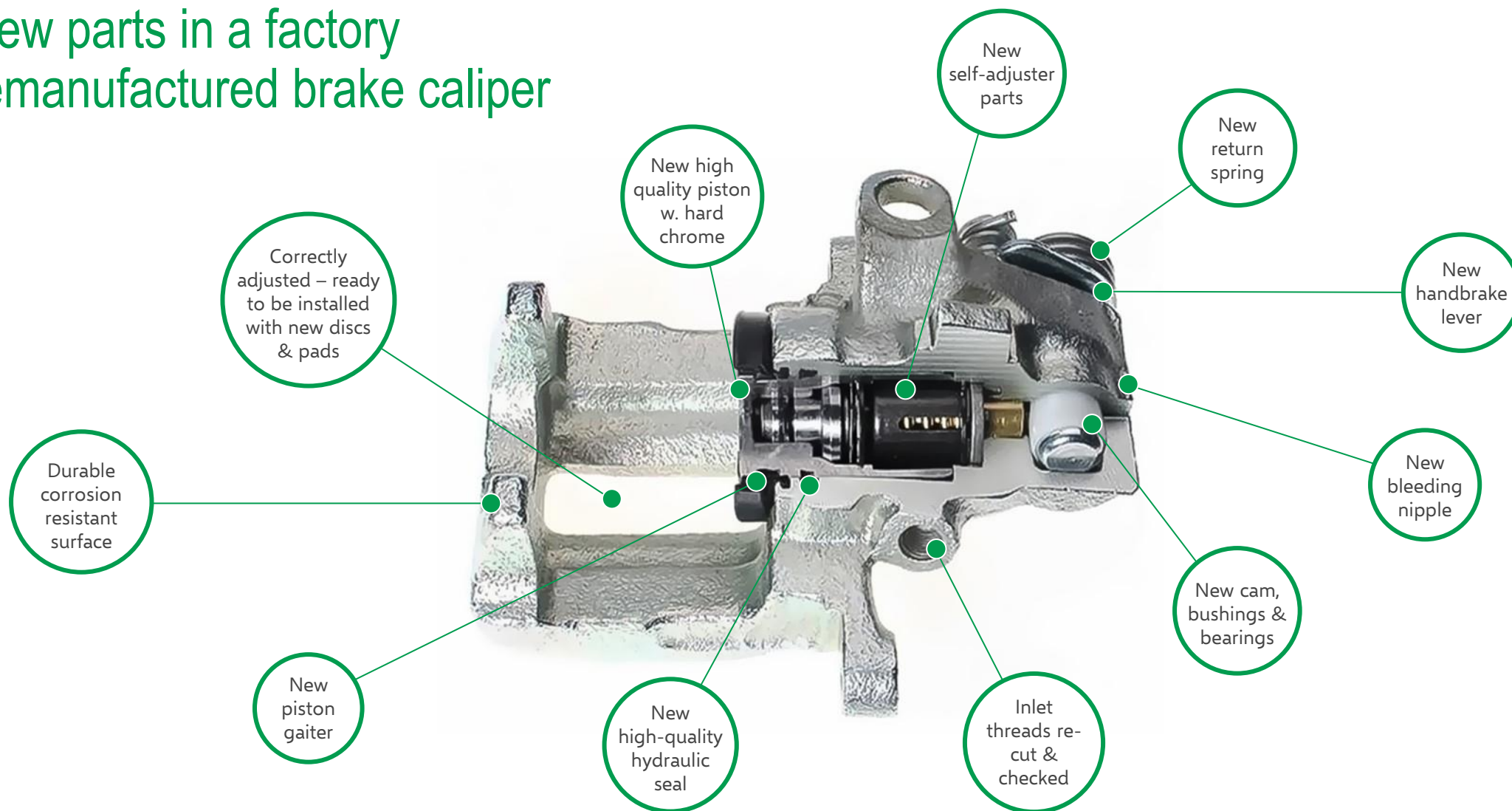


**EPB Motor**  
Group 2080

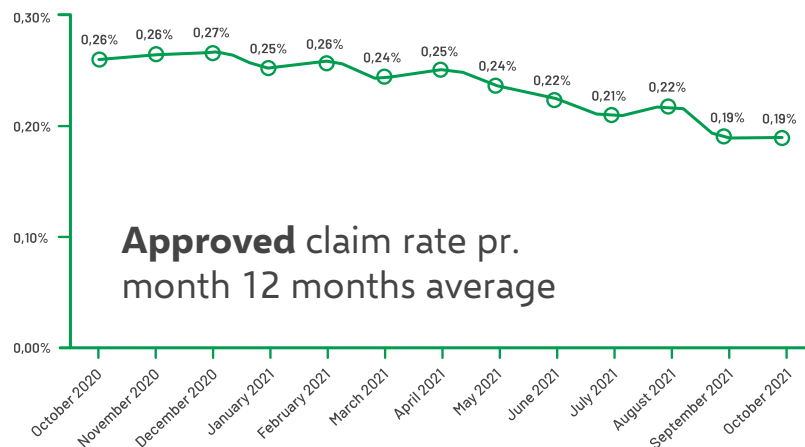




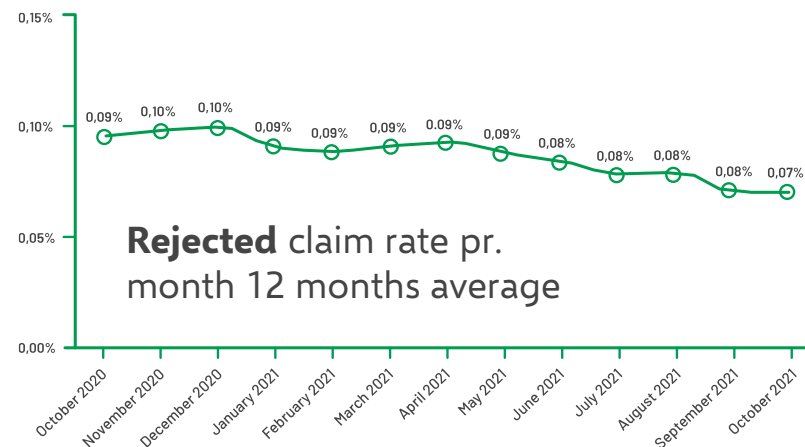
## New parts in a factory remanufactured brake caliper



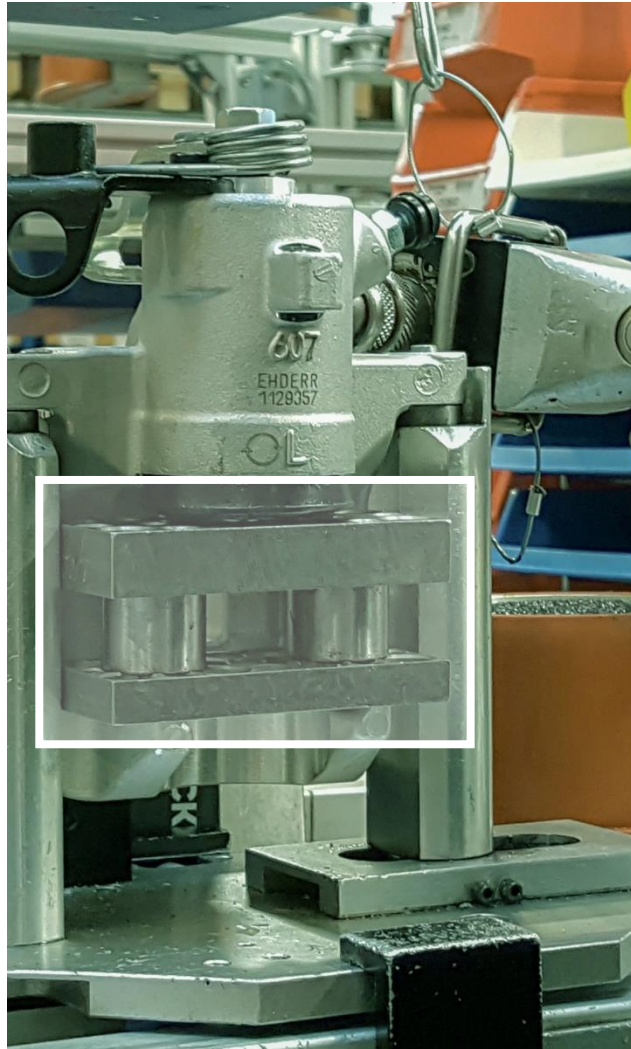
# Customer claims



Top 5 Approved Customer claims - last 12 months		
Error Type	%	Share
Adjustment mechanism in piston falls out	0,02%	10,9%
Adjustment mechanism is worn / locks up	0,02%	9,7%
No roll-back	0,02%	9,1%
Adjustment mechanism is loose	0,01%	6,4%
O-ring groove not clean	0,01%	4,4%



Top 5 Rejected Customer claims - last 12 months		
Error Type	%	Share
Other (not caused by Budweg)	0.07%	95,7%
Damaged threads, aluminium	0.00%	3,4%
Order/delivery issues	0,00%	0.4%
Deformed caliper	0.00%	0.2%
Damaged thread, cast iron	0.00%	0.2%



EOL-test with test block

## End-of-line test (EOL)

### Standard pneumatic end-of-line test

The end-of-line test (EOL-test) is performed by an experienced technician on ALL calipers that are being manufactured.

### Test methodology:

The brake calipers are tested with compressed air during the EOL, where a metal test-block is inserted between the caliper claw and the piston(s). All products that deviate from the EOL test will either be discarded or re-manufactured (if possible). All EOL test are likewise registered and evaluated.

During the test, the following points are verified:

### Pressure testing with a testing block:

- Max. acceptable deviation of the test block is  $\pm 0.3\text{mm}$
- The test block's dimensions are verified with a pair of calipers.
- The brake caliper is tested with pressurized air @  $23 \pm 2$  bar
- The roll-back functionality of the piston is tested by verifying that the testing block can slide out.

### Handbrake functionality test:

- Movement of 3-5mm between the "stopping"-point and the handbrake lever.
- The return movement of the piston.
- Noise from bearings.

### Product data for the specific caliper is being verified:

- Casting code
- Engraving
- Correct left/right configuration

### Final visual inspection:

- Are all parts mounted correctly
- Is the product presentable (does it look well)
- Is the surface of the piston parallel with the caliper claws
- Is the sealing surface correctly manufactured
- Is the product properly lubricated with silicone grease

# Benchmark Test Conditions

## Methodology

The saline solution is controlled with a refractometer to ensure proper salt content.  
The saline solution is pH-corrected prior to the test with an electronic pH-meter

- All components are examined for defects prior to the test
- All components are rinsed in distilled water prior to the test
- All components are spaced 35cm apart in the chamber

## Test duration

72 hours

## Caliper Components

The Budweg calipers are calipers picked from our ordinary stock. The competing calipers are unaltered calipers purchased through ordinary retailers.

## Saline Solution

Saline solution w. 5% salt (5kg salt w. 95l water) pH 6.5-7.2 @ 23±3°C

## Salt Spray Chamber Conditions







The conditions for the salt-spray chamber conforms to ISO standard 9227






Chamber temperature	35±2°C
pH value	6.5 – 7.5
Pressure	1.1 bar
Pressure chamber temperature	46°C
Reservoir Volumen	200 l



DURABILITY - BENCHMARKING



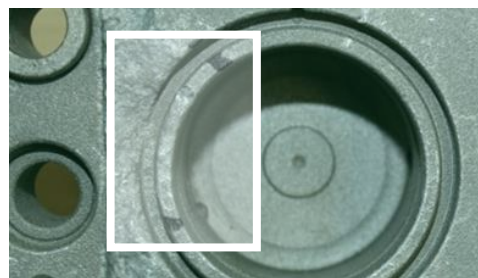
BUDWEG		
Part	Before	After
Caliper Housing		
Piston		
Guide Pins		

COMPETITOR		
Part	Before	After
Caliper Housing		
Piston		
Guide Pins		



## Not approved calipers

All calipers are inspected visually during the manufacturing. Any deviation from the Budweg quality standard is discarded. The below examples show various causes that will result in the caliper being discarded during manufacturing.



Wear next to the dust cap



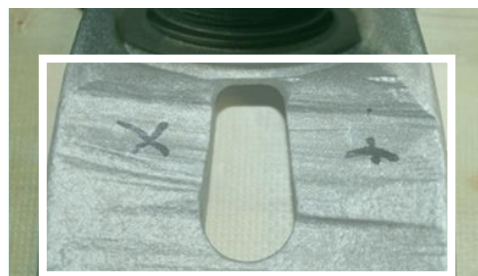
Non repairable thread



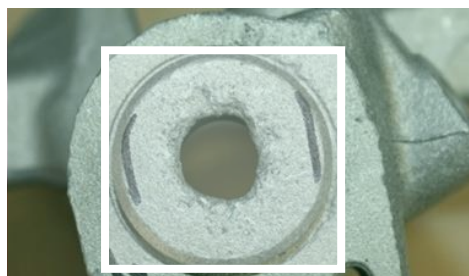
Damaged caused by physical force



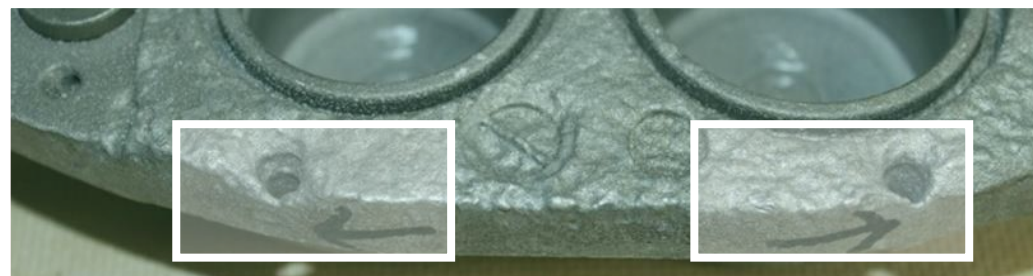
Breakage



Wear from the brake disc on the caliper claw



Wear around the insert for the bushing



Not sufficient material for mounting

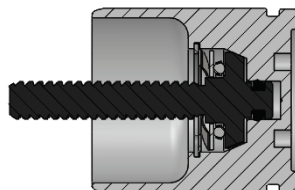
# Product improvements

## Improvements based on customer feedback

### Old version



### New version



## Improvements to EPB motors

Structural improvements to the EPB housing

To ensure better structural stability, the mounting area (the fin) of the EPB-motor was extended and the height increased.

- The length of the "fin" was increased from 10mm to 50mm on the Budweg housing.
- The thickness of the "fin" was increased from 4mm to 6.5mm



DURABILITY

## Metal Gears for improved durability

During benchmarking we perform 100,000 activations of the motor.

EPB motors equipped with plastic gears were subject to deformities and abrasion after 75,000 activations.

Plastic gears are therefore exchanged for metal gears in Budweg's EPB motors



**BUDWEG**

# Meeting OE Requirements

Our calipers are designed to meet OE standards, and all Budweg calipers have passed a sequence of extensive inhouse testing before being made available to the market.

Furthermore Budweg's products are being tested against competing products to ensure that our products maintain the highest level of product quality on the aftermarket.



## 1. Fatigue Test EPB

**Cast Iron:** 100,000 strokes  
**Aluminium:** 100,000 strokes



## 2. Hydraulic fatigue test

**2.1:** 70,000 strokes endurance test  
**2.2 Cast Iron:** 210,000 strokes  
**2.3 Aluminium:** 225,000 strokes



## 3. Burst Test

350 bar / 10 sec.

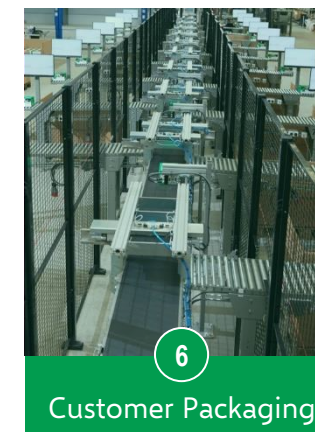
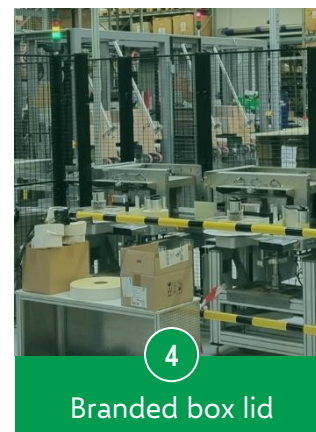
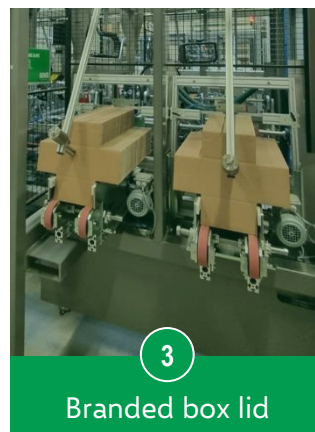
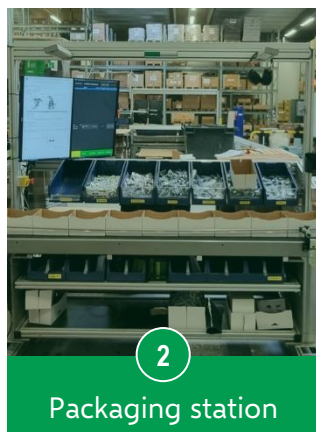
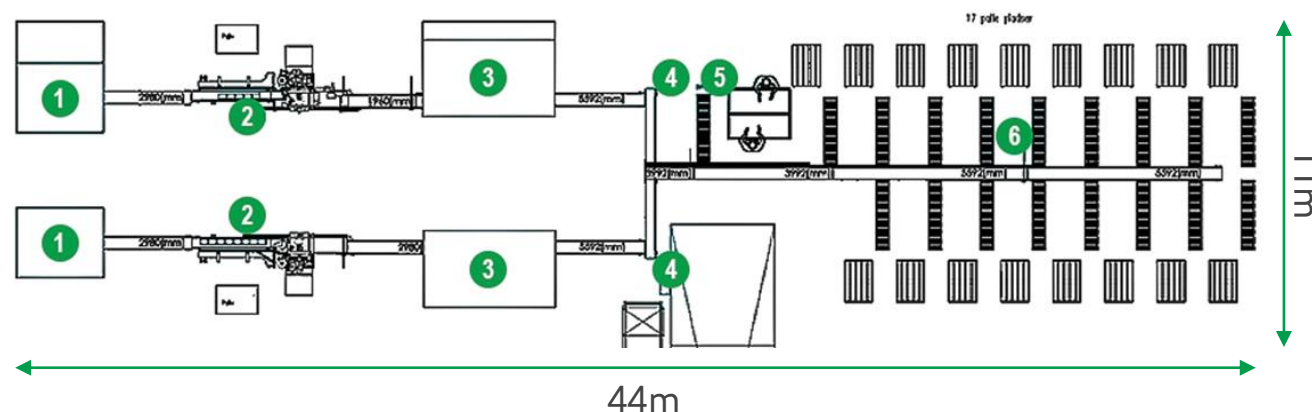


## 4. Salt Spray Test

24 / 72 hours

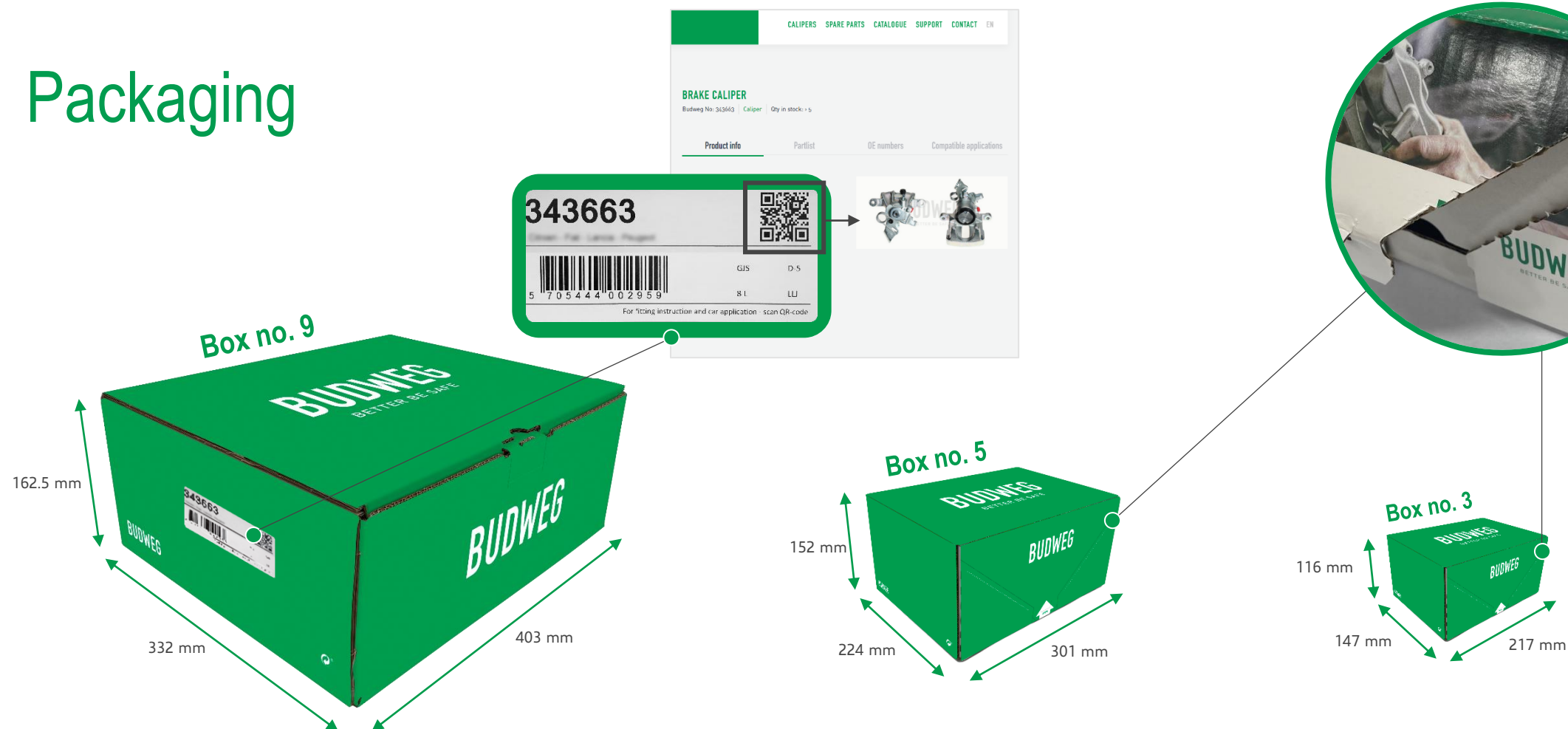
# Packaging line facts

- Max capacity of 5500 units / shift
- 8 brands can be packaged simultaneously
- Can handle two different standard box-sizes





# Packaging

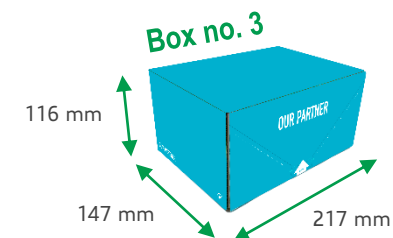
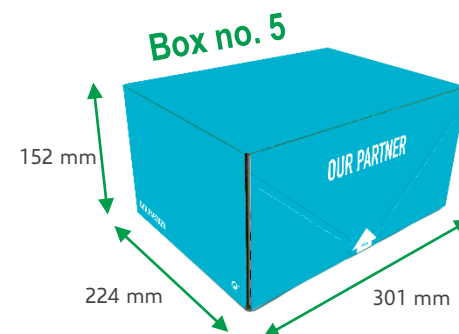
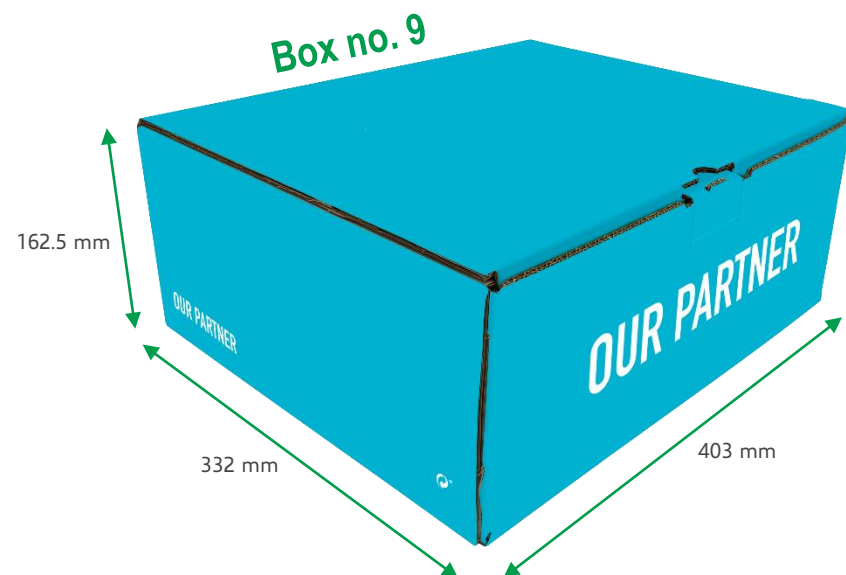


Percentage of units packaged per box size: 9 = 0.5%, 5 = 22%, 3 = 77.5%

**BUDWEG**



# Private Label



# Assembly lines



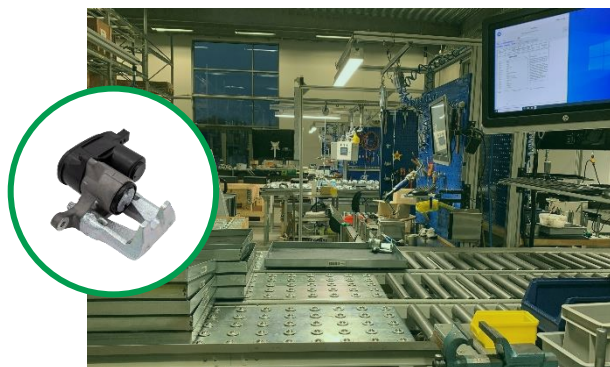
**Automatic shuttle line**  
Main production line

**Workers:** 12  
**Capacity:** 6600 pcs/week



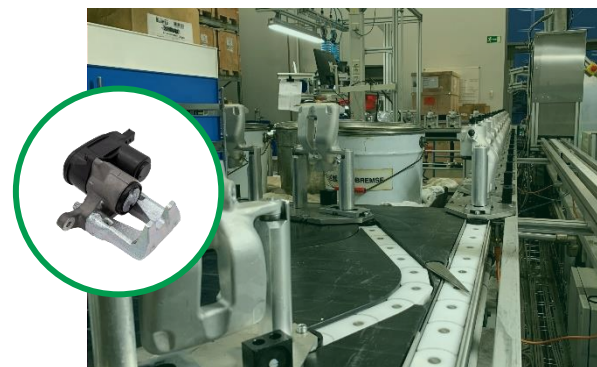
**Small series assembly line**  
Unique caliper assembly

**Workers:** 6  
**Capacity:** 1150 pcs/week



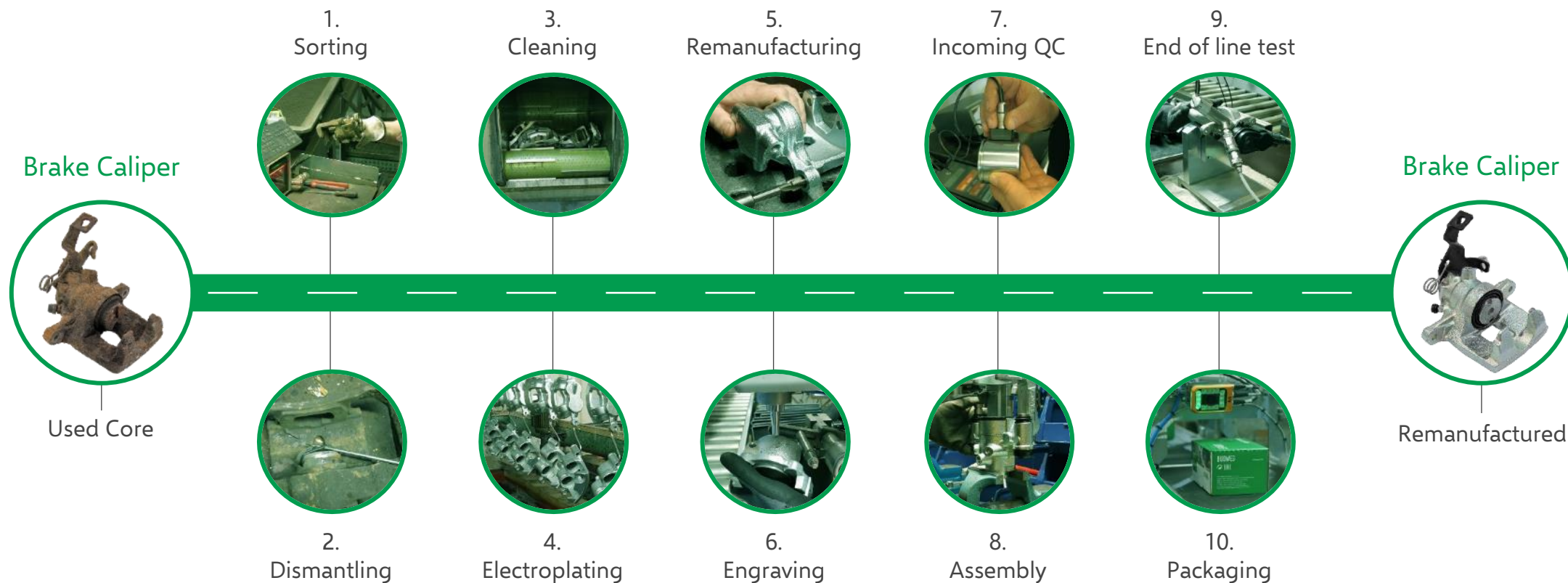
**Line assembly**  
Extended production line

**Workers:** 8  
**Capacity:** 3700 pcs/week



**In-line assembly**  
High volume assembly mostly  
newman calipers

**Workers:** 5  
**Capacity:** 3800 pcs/week



[MATTERPORT online factory tour](#)

**7** AFFORDABLE AND  
CLEAN ENERGY



**Results 2020**

- 82% of Budweg's energy consumption is generated by sustainable energy sources like sun, wind and water.

**8** DECENT WORK AND  
ECONOMIC GROWTH



**Results 2020**

- 3 workplace accidents with leave but without permanent injury
- 0 workplace accidents with leave and with permanent injury
- 4% sick-leave
- 6% employee turnover including new employments
- Average retention rate of 10 years

**12** RESPONSIBLE  
CONSUMPTION  
AND PRODUCTION



**Results 2020**

- 85% of the generated waste is recycled
- Initiating process for systematically monitoring Budweg's Code of Conduct for key suppliers

**4** QUALITY  
EDUCATION



**Results 2020**

- 6 initiated educational programmes for trainees/students



**BUDWEG**  
REMANUFACTURED

**STARTERS**

- ☐ **Price setting**  
A variety of prices to suit your budget.
- ☐ **Delivery performance**  
The shortest possible delivery time to your location.
- ☐ **Product range**  
Complete range of products to suit your needs.

**MAIN COURSES**

- ☐ **Remanufacturing capabilities**  
A variety of products to suit your needs.
- ☐ **Additional Details**  
A variety of products to suit your needs.
- ☐ **Remanufacturing capabilities**  
A variety of products to suit your needs.

**DESSERTS**

- ☐ **Customer information and sharing**  
A variety of products to suit your needs.
- ☐ **Remanufacturing capabilities**  
A variety of products to suit your needs.

**BUDWEG**  
BETTER BE SAFE

**Budweg Caliper is launching coloured brake calipers for Tesla Models**

**List of supported Tesla models**

**Pre-order**

**Delivery**

**Budweg Caliper A/S**  
Industrivej 13, DK-8260 Odense S  
+45 66 12 12 12 | info@budweg.com | www.budweg.com

**BUDWEG**  
BETTER BE SAFE

**DEAR CUSTOMER,**

**WEEKS**

**WEEKS**

**Express Orders will NOT be affected by the maintenance period.**

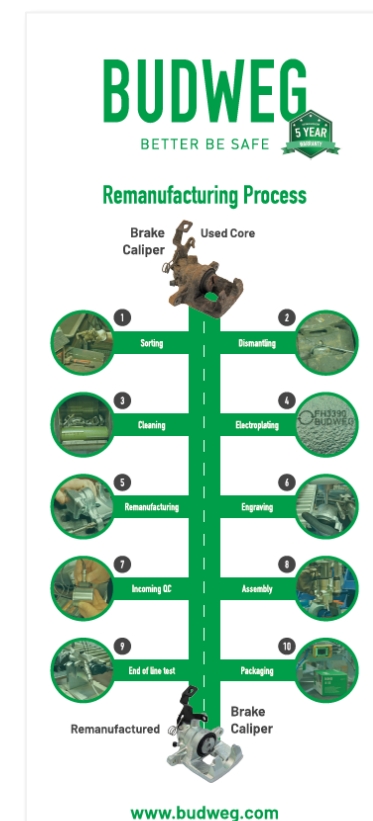
**THE BUDWEG TEAM**

**Budweg Caliper A/S**  
Industrivej 13, DK-8260 Odense S  
+45 66 12 12 12 | info@budweg.com | www.budweg.com

**BUDWEG**  
BETTER BE SAFE

**TANJA EHRIKKE**  
Area Sales Manager DACH  
info@budweg.com  
+49 176 1027111

**Budweg Caliper A/S**  
Industrivej 13, DK-8260 Odense S  
www.budweg.com



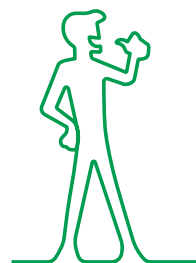
**BUDWEG**  
BETTER BE SAFE

**5 YEAR WARRANTY**

**Factory remanufactured brake calipers of the highest quality**

- 5 years of warranty
- Claims rate below 0.3%
- 4200 Caliper models & 2400 Spare parts
- Product range covering 98% of the passenger vehicles in Europe
- First to market with the newest aftermarket brake caliper models
- Extensive range of Electronic Parking Brakes (EPBs) and brake calipers for EVs and LCVs

**www.budweg.com**



**BUDWEG**





Invitation to two days of racing and brake caliper tech with Budweg Caliper at Gelleråsen Arena

12-13 May 2022

CARs: Agila GSK - Porsche 911 - Ferrari - Lamborghini

**Dinner**

After a successful day of racing, you will be invited to a dinner with Budweg Caliper at Gelleråsen Arena.

**Racing & networking**

Get to know Agila GSK in a real world of racing tracks, located next to the scenic Karaboga. In fact, it was established as Sweden's first racing track, and has since hosted some of the most famous drivers in the world. You will get to see the driver of the Danish custom apartment Agila GSK, as well as a presentation of one of the most popular cars in the world.

**Brake caliper seminar**

It's worth all the racing though, as we also have a brake caliper seminar, where you can get updated on both the current developments in brake caliper technology in general and Budweg's products specifically.

We are looking forward to seeing you at the track.

- TEAM BUDWEG CALIPER



**PROGRAMME**

**Thursday 12th May**

- 10:30 - 11:00: Introduction & safety briefing
- 11:00 - 11:30: Racing
- 11:30 - 12:00: Lunch
- 12:00 - 13:00: Racing
- 13:00 - 14:00: Check out Karaboga track
- 14:00 - 15:00: Dinner

**Friday 13th May**

- 08:00 - 09:00: Breakfast
- 09:00 - 10:00: Brake caliper seminar
- 10:00 - 11:00: Lunch
- 11:00 - 12:00: End of event

**BUDWEG**  
10110 10110

**Agila GSK**  
Gelleråsen Arena, Gelleråsen 55, 5500 Gelleråsen, www.gellerasen.se  
Karaboga track, Gelleråsen 55, 5500 Gelleråsen, www.karaboga.se



Invitation to two days of racing and brake caliper tech with Budweg Caliper at Gelleråsen Arena

12-13 May 2022

CARs: Agila GSK - Porsche 911 - Ferrari - Lamborghini

**Dinner**

After a successful day of racing, you will be invited to a dinner with Budweg Caliper at Gelleråsen Arena.

**Racing & networking**

Get to know Agila GSK in a real world of racing tracks, located next to the scenic Karaboga. In fact, it was established as Sweden's first racing track, and has since hosted some of the most famous drivers in the world. You will get to see the driver of the Danish custom apartment Agila GSK, as well as a presentation of one of the most popular cars in the world.

**Brake caliper seminar**

It's worth all the racing though, as we also have a brake caliper seminar, where you can get updated on both the current developments in brake caliper technology in general and Budweg's products specifically.

We are looking forward to seeing you at the track.

- TEAM BUDWEG CALIPER



**PROGRAM**

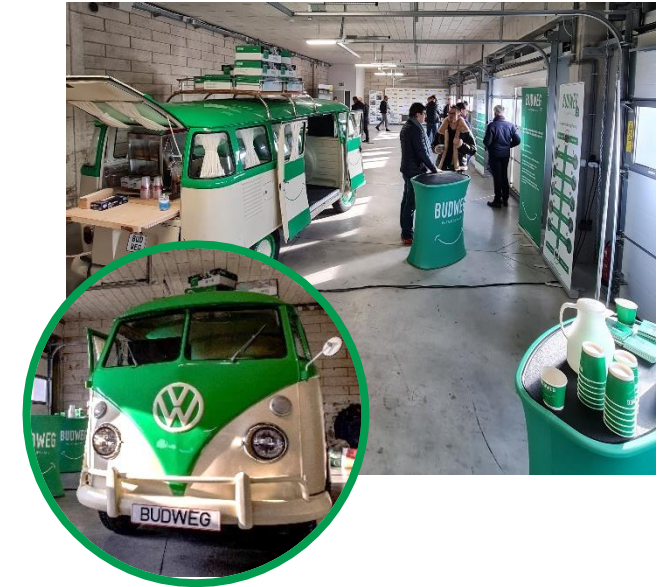
**Środa 10 marca**

- 10:30 - 11:00: Przyjazd do obiektu Budweg & prezentacja w sali konferencyjnej
- 11:00 - 12:00: Prezentacja firmy Budweg & prezentacja filmowa
- 12:00 - 13:00: Zakończona w hali w obiektach
- 13:00 - 14:00: Kolacja w obiektach

**Czwartek 17 marca**

- 08:00 - 09:00: Wyjazd do obiektu Budweg
- 09:00 - 10:00: Zakończona firmy Budweg
- 10:00 - 11:00: Lunch
- 11:00 - 12:00: Wyjazd z obiektu Budweg

**BUDWEG CALIPER A/S**  
Kontakt: 011 1 14 1010 | E-mail: 1 | www.budweg.com



**BUDWEG**  
Racing



**BUDWEG**



### TUNGA BROMSOK FÖR LÄTTA NYTTFOORDON

Den danska bromsoktillverkaren Budweg Caliper A/S är inte enbart en leverantör av bromsok för svenska fordon och bilar utan erbjuder även ett omfattande sortiment av bromsok för lätta nyttfordon (Light Commercial Vehicles, LCV) – i Folkman kallade skåpbilar.



Bromsok för en skåpbil. Lättgörlig och lätt att byta ut. Budweg Caliper A/S levererar bromsok till alla fordon som tillverkas i Europa. Detta gör att de kan erbjuda ett stort utbud av bromsok till sina kunder. Budweg Caliper A/S är en av de största tillverkarna av bromsok i världen. De har ett stort antal fabriker och verkstäder över hela världen. Budweg Caliper A/S är en av de största tillverkarna av bromsok i världen. De har ett stort antal fabriker och verkstäder över hela världen.

#### Reservdelar och stöd för ett påfrestande liv

Med tanke på den höjande andelen av fordon som är utrustade med reservdelar och stöd för ett påfrestande liv. Budweg Caliper A/S erbjuder ett stort utbud av reservdelar och stöd för ett påfrestande liv. Detta gör att de kan erbjuda ett stort utbud av reservdelar och stöd för ett påfrestande liv.


#### Budwegs bromsok – även bromsok för skåpbilar

Budweg är välkända för sina bromsok för personbilar, men de erbjuder även bromsok för skåpbilar. Detta gör att de kan erbjuda ett stort utbud av bromsok till sina kunder. Budweg Caliper A/S är en av de största tillverkarna av bromsok i världen. De har ett stort antal fabriker och verkstäder över hela världen.

Många på skåpbilar som Budweg kan leverera bromsok till: Chevrolet, Chrysler, Citroën, Fiat, Ford, Honda, Hyundai, Isuzu, Iveco, JMC, Kia, Land Rover, Mercedes-Benz, Nissan, Opel, Peugeot, Renault, Saab, Scania, Sevel, Škoda, Suzuki, Toyota, Volkswagen, Volvo, VW.

### BRAKE CALIPERS by Budweg Caliper A/S

THE DANISH BRAKE MANUFACTURER OF BRAKE CALIPERS, BUDWEG CALIPERS, HAS BEEN MANUFACTURING BRAKE CALIPERS OF THE HIGHEST QUALITY IN DENMARK SINCE 1976, AND TODAY OFFERS ONE OF THE LARGEST RANGES OF BRAKE CALIPERS FOR THE EUROPEAN FLEET OF PERSONAL VEHICLES, EFFECTIVELY COVERING 90% OF ALL PERSONAL VEHICLES IN OPERATION.



Budweg Caliper A/S is a leading manufacturer of brake calipers for personal vehicles. The company has a long history of manufacturing high-quality brake calipers for a wide range of vehicles, including cars, vans, and trucks. Budweg Caliper A/S is a leading manufacturer of brake calipers for personal vehicles. The company has a long history of manufacturing high-quality brake calipers for a wide range of vehicles, including cars, vans, and trucks.

### BUDWEG BETTER BE SAFE

#### Framtiden är elektrisk och hållbar

Budweg Caliper har utvecklat ett sortiment av bromsok som är utrustade med 80% av elektriska och hållbara komponenter.



Budweg Caliper A/S is a leading manufacturer of brake calipers for personal vehicles. The company has a long history of manufacturing high-quality brake calipers for a wide range of vehicles, including cars, vans, and trucks. Budweg Caliper A/S is a leading manufacturer of brake calipers for personal vehicles. The company has a long history of manufacturing high-quality brake calipers for a wide range of vehicles, including cars, vans, and trucks.

## PO PROSTU ZACISKI HAMULCOWE



5 LAT GWARANCJI

## Zaciski hamulcowe najwyższej jakości

- Asortyment produktów pokrywający 98% pojazdów osobowych w Europie
- 4200 modeli zacisków i 2400 zestawów naprawczych
- Poziom reklamacji poniżej 0,3%
- 5 lat gwarancji

www.budweg.com

## BUDWEG BETTER BE SAFE

### Budweg Caliper A/S - English

Stilet op af Rune Kvistgaard 1. feb. · 📍

#budwegcaliper



BUDWEG BETTER BE SAFE

Launching aftermarket brake calipers for TESLA models S & X



### Budweg Caliper A/S

1.067 følgere · 3d · 📍

The Budweg Caliper branded Agile SCX that is currently being built by Danish Agile Automotive is coming along nicely.

- Stay tuned, and follow the progress 🙌

#budwegcaliper #agileautomotive #kandborgcrashing #budweg

Se oversættelse




in

### budweg\_caliper

Synes godt om fra rambuschmartin og 4 andre

budweg\_caliper The mud is thick as gravy and all the drivers are ready for the first day of the santa dominica race.

Go team Tokic!



### YouTube

Beskrivelse


BUDWEG | Electronic release of a parking brake

0 Likes · 68 Visninger · 2. mar. 2021

In this video, we guide you through the electronic release of a parking brake.

We specialise in calipers. We remanufacture already used calipers and manufacture new ones. In both cases, we supply calipers which match or exceed the quality of the originals.


Visit our website and learn more: [www.budweg.com/](http://www.budweg.com/)



# OUR PARTNER

## ELECTRICAL VEHICLES

Brake caliper range of EPBs covers more than 80% of the EVs in Europe





Audi: A3, A4 BMW: 225e, 330e, i3, iX Citroën: Berlingo, C5, E-JAM'P, E-SPACE TOURER, Saxa 08, DS7 Pkx, Panda, Seicento Ford: Corsar, Focus, Kuga Hyundai: Kona, Kona ixeo: Daily 35, Daily 50 Jaguar: I-pace Kia: Ceed, e-Niro, Optima, Xceed Land Rover: Range Rover, Range Rover Sport MAH: eTGE 3, eTGE 4 Mercedes: B-Electric Drive, C350, E350, eSprinter, GLC550, Vito E-cell Mid Countryman Mitsubishi: i-Miev, Outlander PHEV E-RV200, Leaf Opel: Corsa, Grandland Peugeot: 3008, 508, E-EXPERT E-TRAVELLER, Partner Renault: Captur, Flanco, Kangoo, Zoe Volvo: C30, S60, S90, V60, V90, XC40, XC60, XC90 VW: e-Crafter, E-Golf, E-Load Up, E-Up, Golf, Passat, Passat Estate

### EPB MOTOR IMPROVEMENTS

Exchanged Plastic For Metal Gears

Increased Mounting Durability



## OUR PARTNER

### Framtiden är elektrisk och hållbar

Our Partner har utökat sitt sortiment av bromsok så att det täcker mer än 80 % av elbilarna på de europeiska vägarna.

Internationella energiförbundet IEA uppskattar att antalet elbilar 2019 motsvarade 2,6 % av världsmarknaden (7,2 miljoner elbilar), och att den procentantalet ökar till 60 % under perioden 2014 - 2019.

Det råder därför ingen tvivel om att marknaden för elbilar ständigt växer och kommer att utgöra en betydande del av framtidens bilpark. För att möta den positiva utvecklingen och efterfrågan är Our Partner redo att förse 80 procent av elbilarna på de europeiska vägarna med bromsok.


**Förbättrade elektroniska parkeringsbromsar (EPB)**  
Elbilar betecknas vara 4-5 gånger effektivare än bilar med konventionella förbränningsmotorer, men det finns fortfarande utmaningar för förbättringar – särskilt när det gäller elektroniska parkeringsbromsar. Därför har flera av Our Partner EPB-er förbättrats med olika uppgraderingar, t.ex. förstärkt plasthöljen och byta av plasthöljet mot metallhöljet i själva EPB-motorn, vilket bidrar till att öka EPB-motorns hållbarhet och livslängd.

**Testad för att klara 100 000 bromsningar**  
Alla Our Partner EPB-er och EPB-motorer testas i förstagig interna utmaningar, där EPB-er ska klara klara minst 100 000 aktiveringar (motsvarande cirka 10 års användning) med 20 djupa bromsaktiveringar i en inbäddad säll som Our Partner-produkt med fem års garanti. Samtidigt släuttestas alla ok, vilket innebär att Our Partner har en reklamationsfrekvens på cirka 0,2 % - Bättre än snittet!

**Märken och modeller på elbilar som Our Partner kan leverera bromsok till:**  
Audi: A3, A4 BMW: 225e, i3 Citroën: Berlingo, C5, Saxa 08, DS7 Pkx, Panda, Seicento Ford: Corsar, Focus, Kuga Hyundai: Kona, Kona ixeo: Daily 35, Daily 50 Jaguar: I-pace Kia: Ceed, e-Niro, Optima, Xceed Land Rover: Range Rover, Range Rover Sport MAH: eTGE 3, eTGE 4 Mercedes: B-Electric Drive, C350, E350, eSprinter, GLC550, Vito E-cell Mid Countryman Mitsubishi: i-Miev, Outlander PHEV E-RV200, Leaf Opel: Corsa, Grandland Peugeot: 3008, 508, E-EXPERT E-TRAVELLER, Partner Renault: Captur, Flanco, Kangoo, Zoe Volvo: C30, S60, S90, V60, V90, XC40, XC60, XC90 VW: e-Crafter, E-Golf, E-Load Up, E-Up, Golf, Passat, Passat Estate

### 1:1 Remanufacturing


Our Partner remanufactures brake calipers to the same quality as new. This means that you can get the same quality as new, but at a lower cost. This is because we use the same materials and processes as the original manufacturer, but we also have a strict quality control system in place.



### SUPPORT 24/7

Our Partner provides 24/7 support for all our customers. This means that you can get help whenever you need it, no matter what time of day or night. We have a dedicated team of experts who are available to help you with any issues you may have.


**DON'T MISS OUT - Stay in Touch**  
Stay in touch with us by following us on social media. We will be posting updates on our products, services, and company news. You can also contact us directly via email or phone.



## OUR PARTNER


### REMANUFACTURED and newly manufactured brake calipers from Our Partner

Our Partner remanufactures brake calipers to the same quality as new. This means that you can get the same quality as new, but at a lower cost. This is because we use the same materials and processes as the original manufacturer, but we also have a strict quality control system in place.




### TESTED again, again, and again

Our Partner tests all our products thoroughly before they are shipped to our customers. This means that you can be confident that our products are of the highest quality and will last for a long time.



### BENCHMARKING for consistently high quality

Our Partner benchmarks our products against the highest quality standards in the industry. This means that we can be confident that our products are of the highest quality and will last for a long time.



### OUR PARTNER

Our Partner provides 24/7 support for all our customers. This means that you can get help whenever you need it, no matter what time of day or night. We have a dedicated team of experts who are available to help you with any issues you may have.

